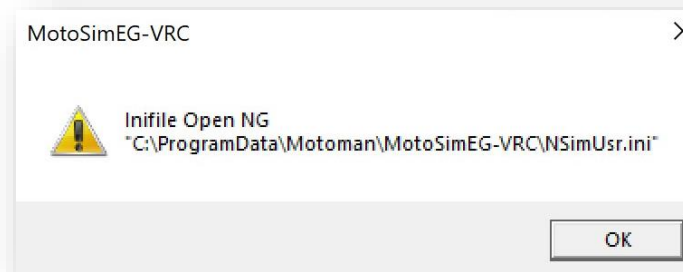


This document captures ideas, experiences, and informal recommendations from the Yaskawa Partner Support team. It is meant to augment – not supersede manuals or documentation from motoman.com. Please contact the Partner Support team at partnersupport@motoman.com for updates or clarification.

How to Fix the MotoSim NSimUsr.ini Error



Introduction

Sometimes software conflicts can happen. An example would be when Windows updates itself and client applications have not yet caught up. This is the case when a user's Windows 10 OS updates to the version "20H2". It causes the above error to appear every time MotoSim is closed.

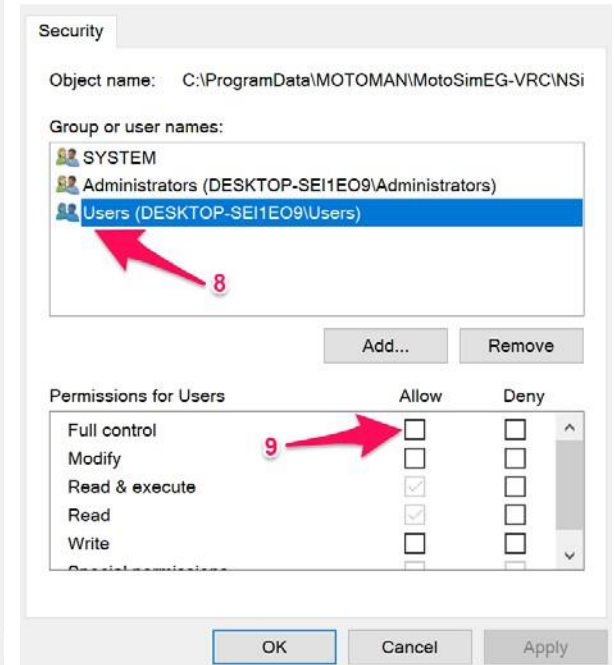
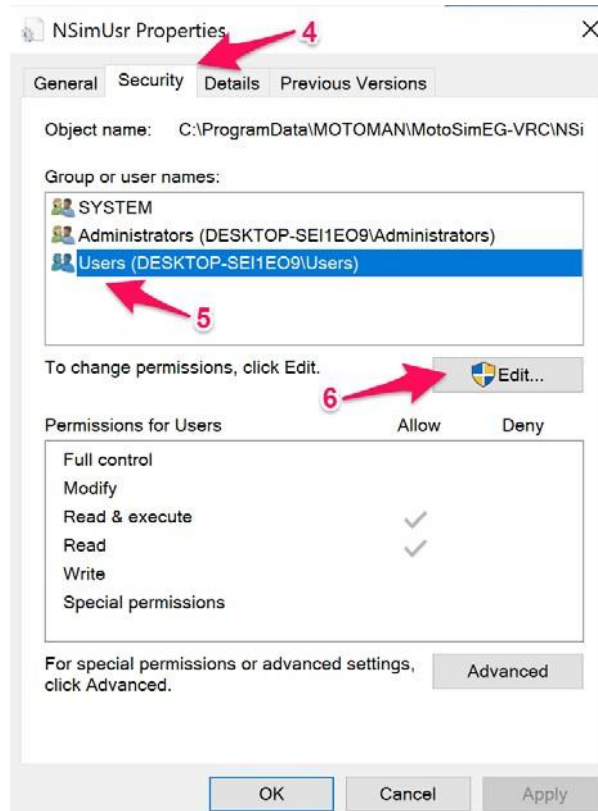
What is NSimUsr.ini and Why is this Happening?

NSimUsr.ini is a file that stores all the data from MotoSim Option Settings. The Windows version 20H2 locks out MotoSim from using or making any changes to its option settings. This Windows update changed some security rights to the "ProgramData" folder...the parent folder of NsimUsr.ini.

This document captures ideas, experiences, and informal recommendations from the Yaskawa Partner Support team. It is meant to augment – not supersede manuals or documentation from motoman.com. Please contact the Partner Support team at partnersupport@motoman.com for updates or clarification.

How-To Fix the Issue

1. Use Windows File Explorer to navigate to...
C:\ProgramData\MOTOMAN\MotoSimEG-VRC.
Note: C:\ProgramData is a hidden folder. You may need to click View, Hidden Items to see it.
2. Right-Click NSimUsr.ini
3. Select Properties
4. Select the Security Tab
5. Select Users (notice that the users group does not have full control of this file)
6. Select Edit Button
7. This opens the Permissions window.
8. Select the Users Group
9. Check the box for FULL CONTROL
10. Select OK on the Permissions Window
11. Select OK on the Security Window



Future Direction

Future versions of MotoSim should automatically resolve this issue during an install.